

**Arran Artists
Open Studios Weekend**



**15th to 18th August
2025**

**For the very best
in contemporary
art and craft
on the Isle of Arran**



www.arranopenstudios.org

Welcome to the Arran Open Studios Weekend

Arran Open Studios sits under the umbrella of
Arran Theatre and Arts Trust.

The aims of the Trust are to promote and develop
the visual, literary and performing arts on Arran
for professionals and amateurs alike and also
include Arran Arts Heritage Trail, Music Arran,
McLellan Poetry Competition and the
McLellan Arts Festival.

Our artists have come together once again to
share their love and passion for their art with
you as part of the Arran Open Studios weekend.

This brochure lists a variety of studios and
venues where art is being created and
displayed on our beautiful island.

Our invitation is extended to all of you...

Whether you are already enjoying art,
or maybe just a wee bit curious...

Whether you already love and feel inspired
by the Isle of Arran...

Or maybe this is your first time...

Whether you want to purchase the object of
your desire, see how the artists work, browse
the studios and creative places - or even if
you want to just pop in for a wee chat
- you are very welcome!

Unfortunately not all studios can
take cards or contactless payment,
so please consider bringing adequate
cash if you think you may wish to buy.



www.arranopenstudios.org
www.arrantheatreandarts.co.uk

THE 2025 ARRAN OPEN STUDIOS

- 1. Simon Lawrence**
- 2. Lucy Cartledge - Artist**
- 3. Alison Barr spinner and weaver**
- 4. Katsock Crafts**
- 5. Island Porcelain**
- 6. Black Fox Studio**
- 7. Scott Macdonald**
- 8. Paul McGarrie Glass Artist**
- 9. Jan Grant**
- 10. MAA Artwork**
- 11. Petra Collins & Andrew Binnie**
- 12. Scottish Rain**
- 13. Josephine Broekhuizen**
- 14. Saskia Pomeroy**
- 15. Tim Pomeroy**
- 16. The Clyde Model Dockyard**
- 17. Karebell Designs**
- 18. Julia Bovee**
- 19. Catherine Rose Creation**
- 20. Nicholas de Maid**
- 21. Iconic Reserve**
- 22. Jan and Friends**
- 23. Lynn's Art on Arran**
- 24. Heather MacLeod**
- 25. Raine Clarke**

**THE ARRAN OPEN STUDIOS
LIST CONTINUES ON
THE FOLLOWING PAGE**

THE 2025 ARRAN OPEN STUDIOS

...CONTINUED

- 26. Zabdi Keen**
- 27. Vivienne Sillar Ceramics**
- 28. Maisy Alice Art**
- 29. Dave Samuels and Ruth Mae**
- 30. Kilmory Workshop**
- 31. Assja Solveiga Baumgartner-Gaile**
- 32. The Piggery**
- 33. Andrew Roi**
- 34. Nick Brooker Art**
- 35. Isobel Milne at Meadowbank Studio**
- 36. Arranach Barrel Furniture**
- 37. Andy Leese Joiner & Furniture Maker**
- 38. Gobhlach Art Studio**
- 39. Ed O'Donnelly**
- 40. Artist Friends of Sannox**
- 41. Saltwater Studio and Gallery**
- 42. Cladach Studio**
- 43. Art at Ach Na Darach**
- 44. Ann Hume**
- 45. Elaine Mackie Wright**
- 46. Ormidale Art**
- 47. Kirsteen Holuj Ceramics**
- 48. Faye Waterlow Artist**
- 49. Fiona Greener**
- 50. E Coral Smith**
- 51. The Studio of Stephanie Province**



**Arran Open Studios
2025 Preview exhibition
BRODICK VILLAGE HALL**



**A delicious sneak preview of our
Open Studios Weekend**

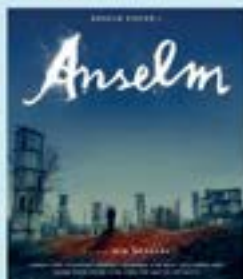
**Friday 11th - Monday 14th
July 2025
from 11am till 4pm**

**Arran Open Studios are hosting a
Film Night**

ANSELM

(2023)

A film by
Wim Wenders



**Sun 10 August at 7.30pm
CORRIE & SANNOX VILLAGE HALL**

Free entry but small donations to the hall appreciated

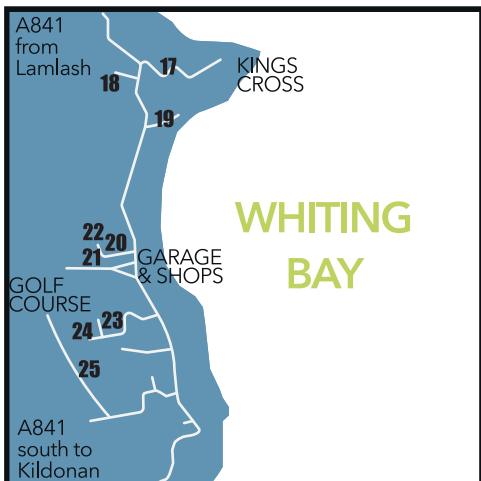
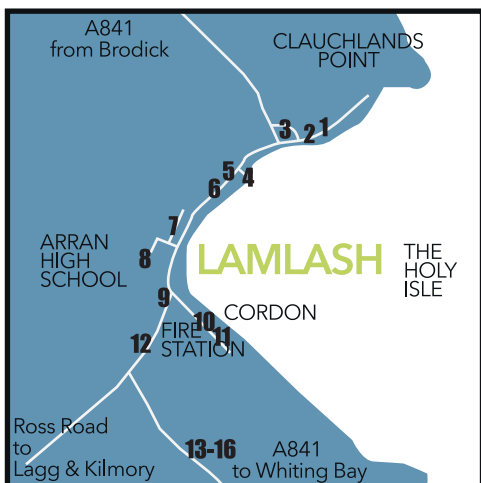
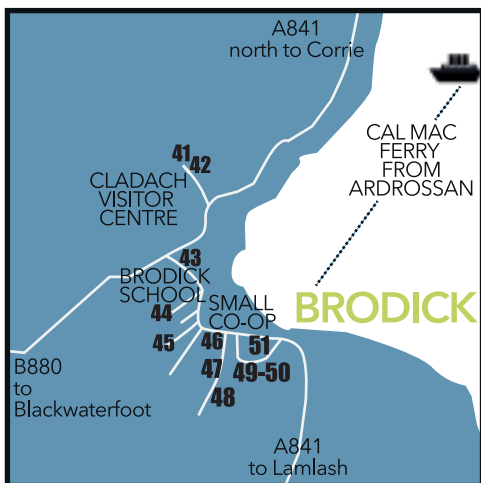


THE ISLE OF ARRAN



This map shows the villages and locations of our artist studios, as a guide to allow you to make your plans to navigate around Arran during your weekend. All studios will be clearly sign posted, so please look out for our ARRAN OPEN STUDIOS logo.

www.arranopenstudios.org



1

Simon Lawrence

Mostly bird & animal portraits.

Smallish in size.

Acrylic paint on paper.

Some mixed media.

t: 01770 600214

e: simonbythesea@outlook.com

Opening times: Fri - Mon 10 till 5pm.

Facilities available: On-site parking. **Seastones, Shore Road, Lamlash, KA27 8LG:** From Brodick. Descend the hill passing the golf club to the shore. Turn left along the shore road and travel 1 kilometre passing the council offices, crossing a small bridge and following a sharp left bend. Some painted white stones on the verge mark the short drive up to Seastones which is on the right.



2

Lucy Cartledge - Artist

Oil and acrylic landscapes on canvas, depicting sea and lakes, along with a few portraits, some gifts and some greeting cards.

t: 07732 337273 e: lucycartledge@icloud.com

Opening times: Fri - Mon

10.30 till 4.30pm. **Facilities available:**

Toilet, parking, wheelchair accessible. **Seagull's Nest, Shore Road, Lamlash, KA27 8LG:** From Brodick, head towards Lamlash & descend the hill to the shore. Turn left along the shore & travel for 650m. Pass the Council Offices, then the hospital turn off & the turn for the Sleep Huts. You will then reach a sharp left bend. Seagull's Nest is just the other side of the bend opposite the passing space.



3

Alison Barr spinner & weaver

Handspun merino and silk scarves and handwoven, hand sewn tweed bags.

t: 07962 983823

e: alisonbarr18@gmail.com

Opening times: Fri - Mon 11 till 4pm.

Facilities available: Parking, toilet, wheelchair accessible. **Kirkaig, Millhill Cres, Lamlash, KA27 8HX:**

Coming into Lamlash from Brodick take last road on the left before main road at bottom of hill. About 1/2 way down Bungalow Road turn left into Millhill Cres.



4

Katsock Crafts

Handspun wool from local flocks, and from merino. Natural hand dyed wool. Handspun and knitted neck warmers and socks, and other hand knitted items.



t: 01770 600110 e: katsparshott@hotmail.com Insta : katsockcrafts. Opening times: Fri - Mon 10 till 4pm. **Facilities available:** Toilet and car parking. **Seagate, Lamlash KA27 8JN:** Located in Lamlash, turn in at the Drift car park and continue straight ahead towards the clocktower. Seagate is the small white house to the right hand side of the clocktower. Enter through small brown gate marked 'Seagate'.

5

Island Porcelain

Individual, ornamental figures depicting the wonderful array of wildlife surrounding the Arran coastlines and hills. Our pieces make unique keepsakes or gifts for friends or loved ones of any age.



t: 01770 600 919 e: info@islandporcelain.com www.islandporcelain.com Opening times: Fri - Mon 10 till 5pm. **Facilities available:** Nearby parking, wheelchair access - narrow doorway. **Main Street, Lamlash KA27 8LA :** In the middle of Lamlash village, Island Porcelain is just beyond the Drift Inn. The 323 bus from Brodick pier can drop you directly at the door.

6

Black Fox Studio

Printing, etching, charcoal and glass. A range of framed Arran maps & charts is also available, plus a bespoke picture-framing service.



t: 07753 809183 e: blackfoxframing@gmail.com Facebook: blackfoxframingarran Opening times: Fri - Mon 10 till 4pm. **Facilities available:** Public parking and toilet opposite. **Undercliffe, Lamlash KA27 8LZ:** Undercliffe is just up from the Glenisle; the studio is at the far end of the driveway, behind the house.

7

Scott Macdonald

Scott Macdonald's oil & watercolour paintings often depict the rugged beauty of the Scottish Highlands & Islands or the urban environment of Glasgow.

He uses a vibrant color palette & bold palette knife & brushstrokes to capture the essence and atmosphere of these places.



t: 07746 698682 e: storrmedia@gmail.com

www.scott-macdonald.co.uk Opening times: Fri - Mon 11 till 4pm.

Facilities available: Parking to the front of Hamilton Terrace.

16A Hamilton Terrace Lamlash KA27 8LR: From Brodick enter the village, passing the Glenisle Hotel, Hamilton Terrace is on the left. 16A is midway in the row of smaller cottages to the rear.

8 Paul McGarrie Glass Artist

Paul is a glass artist fusing glass in many shapes and forms and colours creating many unique pieces and stand alone sculptures. Paul's work also includes woodcarving



t: 01770 601291

e: isleofarranglassartist@outlook.com

www.paulmcgarriegllassartist.com Opening times: Fri - Mon 11 till 5pm.

Facilities available: Parking on street. **3 Park Terrace, Lamlash KA27 8NB:** Driving through Lamlash turn right at the Lamlash Bay Hotel and follow the road around by the builders yard, my studio is the 5th house on the right.

9 The Isle Spinner - Jan Grant

Creating bespoke handspun, handwoven scarves, cowls & textiles. With unique combinations of colour and fibre, I use Merino, Shetland, Bluefaced Leicester, Alpaca, Mohair, Cashmere Silk, Bamboo, Soybean and even Pineapple!



t: 07974 659925 e: theislespinner@gmail.com

Facebook : The Isle Spinner. Opening times: Fri - Mon

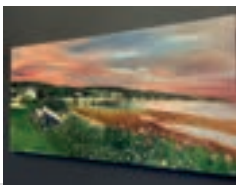
10.30 till 4pm. **Facilities available:** On street parking. **2, Glenraig Place, Lamlash, KA27 8PJ :** Travelling through Lamlash towards Whiting Bay, as you leave the village go past high school on right, police station on left, pass over the bridge & turn immediate right into Glenraig Place. (If you pass fire station on your left you have gone too far)

10

MAA Artwork

Multi medium realism paintings, mainly focusing on landscapes inspired by living in Scotland and growing up holidaying on Arran.

Other subjects painted are pet portraits and wedding venues.



t: 07500 770778 e: maaartwork97@hotmail.com

www.maaartwork.co.uk Opening times: Fri - Mon 10 till 4pm. **Facilities available:** Parking, toilets. **Hawthorn, Cordon, Lamlash, KA27 8NQ:** From Arran High School, continue heading South towards Whiting Bay, turn left after humpback bridge, follow tarmac road, past caravan park, through cross roads, to the end of tarmac road, second house on the right.

11 Petra Collins & Andrew Binnie, Sometimes Gallery

A joint exhibition of stained glass & landscapes. Petra is inspired by 20th Century Scandinavian design & the marine world. Andrew's focus is Arran; seas, mountains & weather.



t: 07968 453827 e: acbinnie@yahoo.com

Opening times: Fri - Mon 10 till 4pm.

Facilities available: Parking at bungalow, ground floor toilet. **Marchfield, Cordon, Lamlash, KA27 8NQ:** After Arran High School turn left towards Cordon. Follow road and track straight to the end. Ours is penultimate house on shore side. Walkers take Cuddy Dook path from Tennis courts. 10mins.

12

Scottish Rain

Landscape photographs of lochs, mountains, glens and seascapes of sea lochs and islands taken in the highlands and west coast of Scotland.



t: 01770307423

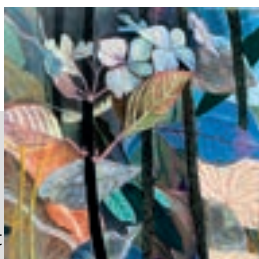
e: scottishrain56@gmail.com

Opening times: Fri - Mon 10 till 6pm.

Facilities available: Parking, wheelchair access. **Fasgadh, Lamlash, KA27 8NN:** From Brodick head for Lamlash. Pass Lamlash fire station on left, Fasgadh is third house on right.

13 Josephine Broekhuizen

I make oil painting and screen prints. The theme is plants and flowers.



t: 07774 003554 **e:** josephine@josephinebroekhuizen.com
www.josephinebroekhuizen.com

Opening times: Fri - Mon 10 till 4pm. **Facilities available:** Parking at layby on main road (or in the yard for disabled or less-able visitors), toilet, wheelchair access.

Whiterock Lamlash, KA27 8NL: 0.8 miles south of Lamlash going towards Kingscross. Whiterock track is opposite layby (on the sea-side). Approx 60m walk from the lay-by to the studio.

14 Saskia Pomeroy

Saskia Pomeroy is a visual artist working mainly in ceramics. Working from her Glasgow studio, Saskia works mainly from the potters wheel and applies her decorative and illustrative decoration on top of her thrown ware.



t: 01770 600287

e: saskia@saskiapomeroy.com **Opening times:** Fri - Mon 10 till 4pm.

Facilities available: Parking at layby on main road (or in the yard for disabled or less-able visitors), toilet, wheelchair access.

Whiterock, Lamlash, KA27 8NL: 0.8 miles south of Lamlash going towards Kingscross. Whiterock track is opposite layby (on the sea-side). Approx 60m walk from the lay-by to the studio.

15 Tim Pomeroy

Sculptures in stone, wood and bronze, drawings paintings and prints. Enjoy the sculpture walk / garden in a four acre woodland where a few sculptures are displayed in the landscape.



t: 07592 744047 **e:** tim@timpomeroy.com **www.timpomeroy.com**

Opening times: Fri - Mon 10 till 4pm. **Facilities available:** Parking at layby on main road (or in yard for disabled or less-able visitors), toilet, wheelchair access. Sculpture garden not accessible to wheelchairs **Whiterock, Lamlash, KA27 8NL:** 0.8 miles south of Lamlash going towards Kingscross. Whiterock track is opposite layby (on sea-side). Approx 60m walk from the lay-by to the studio.

16 The Clyde Model Dockyard

Originally founded in 1789 in Glasgow and revived in 2024, the Clyde Model Dockyard designs and produces maritime and industrial scale models and kits.



t: 01770 600287

e: Enquiries@ClydeModelDockyard.com

www: www.ClydeModelDockyard.com

Opening times: Fri - Mon 10 till 4pm.

Facilities available: Parking at layby on main road (or in the yard for disabled or less-able visitors), toilet, wheelchair access.

Whiterock, Lamlash, KA27 8NL: 0.8 miles south of Lamlash going towards Kingscross. Whiterock track is opposite layby (on the sea-side). Approx 60m walk from the lay-by to the studio.

17 Karebell Designs

Karen designs, draws and hand cuts pictures from paper and card using one of her own watercolour backgrounds, in a wide variety of subject matter. She also makes multi layered cut pictures of wildlife and iconic Arran views.



t: 01770 700 167 **e:** karebell1986@yahoo.com **Facebook :**

KarebellDesigns. Opening times: Fri - Mon 10 till 5pm.

Facilities available: Parking available, wheelchair accessible.

Rowan Lodge, Kingscross, Whiting Bay KA27 8RG: Before Whiting Bay take left turning signposted Kingscross (opposite painted bus shelter) follow first straight bit of track, Rowan Cottage is the first on the right. Karebell Designs is signposted!

18 Julia Bovee Wheatweaver of Auchencaim

Maker of traditional and contemporary straw work influenced by folklore, nature and the wheel of the year.

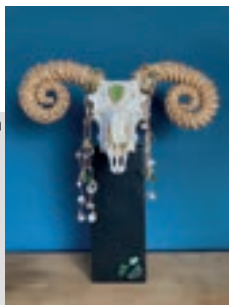
t: 07960 021580 **e:** juliabovee@gmail.com

Insta: [wheatweaverofauchencaim](https://www.instagram.com/wheatweaverofauchencaim)

Opening times: Fri - Mon 10 till 4pm.

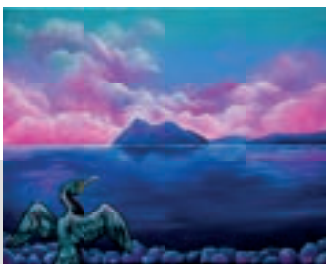
Facilities available: Parking. **Cedarwood,**

Whiting Bay KA27 8RQ: Just before you reach Whiting Bay from the direction of Lamlash turn right up the Auchencaim / Knockenkelly cart track opposite bus stop. The studio is about 1/4 mile up there on the left.



19 Catherine Rose Creations

Vibrant and colourful depictions of local wildlife and landscapes in acrylics.



t: 07947 119942

**e: catherineroscreations
@outlook.com**

www.catherineroscreations

Opening times: Fri - Mon noon till 5pm. **Facilities**

available: Parking. **Sandbraes Villa, Whiting Bay KA278RE:** Second driveway after the "Whiting Bay" sign arriving from Lamlash. Between Fen Place and the sports field.

20 Nicholas de Maid

A passion for free flowing nature and a love of buildings inspire my watercolour paintings, limited edition prints and photographs.



t: 07900 661778

e: nicholasdemaid55

@gmail.com Opening times: Fri - Mon 11 till 4pm. **Facilities**

available: Parking. **Ad Astra, Smiddy Brae Whiting Bay, KA27 8PX :** From the centre of Whiting Bay head up Smiddy Brae turning right and Ad Astra is a bright blue building on the right hand side.

21 Iconic Reserve

Beautiful limited edition A2 prints and gifts signed by artist.



t: 07801 234588 e: gallery@iconicreserve.art

www.iconicreserve.art Opening times: Fri - Mon 10 till 4pm.

Facilities available: Parking. **Ad Astra, Smiddy Brae Whiting Bay, KA27 8PX :** From the centre of Whiting Bay head up Smiddy Brae turning right and Ad Astra is a bright blue building on the right hand side.

22

Jan and Friends

Jan works with upcycled fabrics to create quirky pictures, using free machine embroidery. SaraSpinner is a hand spinner/knitter of alpaca.

There will also be work by Art in Mind.



t: 01770700249 e: janmacgregor45@gmail.com

www.cherrydidi.com www.arranvisualarts.co.uk

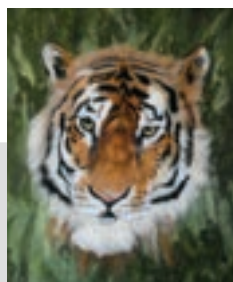
Opening times: Fri - Mon 11 till 4.30pm. **Facilities available:**

Parking for 3 cars, toilet, not wheelchair accessible. **Ardshiel, Whiting Bay KA27 8PX:** Approaching MBS in Whiting Bay from Lamlash, turn up Smiddy Brae. After steep, winding hill, turn right. Ardshiel is 1st on right.

23

Lynn's Art on Arran

Inspired mostly by Arran but sometimes further afield, Lynn creates art work on felt and watercolour.



t: 01770 700542

e: lynnsartonarran@mail.com

www.LynnsArtOnArran.co.uk

Opening times: Fri - Mon 11 till 4pm.

Facilities available: Limited parking.

Kinmount, Middle Road, Whiting Bay,

KA27 8QH : From Whiting Bay seafront take Middle Road just after County Carpets. Follow the hill round 2 bends. Kinmount is on the right shortly after the second bend up a short steep drive.

24

Heather MacLeod

Contemporary Scottish artist, working from her Studio in Whiting Bay. Silk paintings with intense colours depicting the splendour of the local landscape. Abstract views using oils, layered with wax and other textures to give depth on canvas.



t: 01770 700599 e: heathermacleod.arran@btinternet.com

www.heathermacleod.com **Opening times:** If sign is out, I'm open,

or by appointment. **Facilities available:** Parking. Please respect neighbours' access. **Arran Studio, 6 Heatherhill, Whiting Bay KA27**

8QH: First road after County Carpet shop. Follow Middle road as far as bollards. Turn into Heatherhill, Arran Studio is last on right side.

25

Raine Clarke Underwing Studio

Raine Clarke is a contemporary printmaker & painter. Taking inspiration from the beauty of the natural world & Arran's coastline, she specialises in monoprint, linocut, oils & beach-combed objects.



t: 07732 143367

e: underwingstudio.arran@gmail.com Insta: [underwing_studio](https://www.instagram.com/underwing_studio)

Opening times: Fri - Mon 10 till 5pm. **Facilities available:** Toilet, parking in driveway, limited wheelchair access. **The Shielling, Golf Course Road, Whiting Bay, KA27 8QT:** From Brodick: Bus Route 323, turn right after bowling green following signs up the hill to the golf course. Studio (in the garden of The Shielling) on right opposite Viewbank farm steading.

26

Zabdi Keen

Zabdi Keen is a sculptor & environmental artist using multi media to create sculptures, charcoal drawings, traditional wood and stone carving, lettering, driftwood chainsaw carving sculpture trail.



t: 07717 712727 e: info@flyingfever.net

www.zabdikeen.com **Opening times:** Fri - Mon 10 till 4pm.

Facilities available: Parking available at Silversands with 1 mins walk, not wheelchair accessible. **No 2 Coastguard House, Kildonan, KA27 8SD:** From Whiting Bay turn left to Kildonan, park in the lay-by with 2 benches & steps to beach. Walk 1 minute back along road turn right & right again. Follow signs for No 2 Coastguard House.

27 Vivienne Sillar Ceramics

Sea creatures & woodland life are my starting point. I make burnished ceramic sculptures enhanced with smoke firing to give each one unique characteristics. Smooth to touch and beautiful to see.



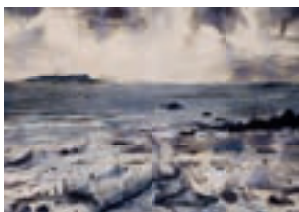
t: 01770 820612 e: viviennesillar@gmail.com www.vivienne

sillarceramics.co.uk **Facebook :** Vivienne Sillar **Opening times:** Fri - Mon 10 till 5pm. **Facilities available:** Toilet, parking in car park off the road 2 mins walk from house. **3 The Old Schoolhouse, Shore Road, Kildonan, KA27 8SE :** Driving the main A841 turn off at the Kildonan sign. Continue to shore road. Look for blue 'P' parking sign on right (sea on left). Once parked follow track away from shore, turn immediate right. Studio is the last house on your left.

28

Maisy Alice Art

Maisy works with a range of different styles and media, including inks, acrylics and watercolour. Her showcased work will mainly be landscape paintings of her favourite Arran scenery.



t: 01770 820 387 e: maisyaliceart@gmail.com www.maisyaliceart.co.uk **Opening times:** Fri till Mon 10 - 4pm. **Facilities available:** Parking. **1 The Old Schoolhouse, Kildonan KA27 8SE:** From Whiting Bay, take the first left into Kildonan, past Kildonan Hotel on the left. It is the third of the first three houses on the right, behind the car park.

29 Dave Samuels & Ruth Mae

Ruth's work includes her delicate and sculptural wooden vessels. She is currently developing the making of sculptural forms in wire. David's work includes furniture, bowed psalteries and is now developing small automata.



t: 075352 95121 e: david@davidsamuels.plus.com **Opening times:** Fri till Mon 11 - 5pm. **Facilities available:** Parking. **The Shed on the Shore, Shore Road Kildonan, KA27 8SE:** From Whiting Bay, take first left down into Kildonan village. Along the Shore Road, The Shed is approx 100metres beyond the Village Hall. Also on the Southend bus route 323.

30

Kilmory Workshop

Turned wood work, small furniture & toys made from Arran wood, including coffee tables, clocks, lampbases, cheeseboards & bowls. Arran Candlemakers candles also sold here.



t: 01770 870310 e: davefurze@outlook.com www.kilmoryworkshop.co.uk **Opening times:** Fri - Mon 9.30 till 5.30pm. **Facilities available:** Carpark, wheelchair access difficult but not impossible - nearest public toilets at Kilmory public hall. **Kilmory Workshop, Kilmory, KA27 8PH:** Workshop is signposted at Kilmory at south of the island. Turn inland by sign from the coast road & follow signs past church to the top of the hill.

31 Arran Gems - Jewellery & Art by Assja Solveiga Baumgartner-Gaile

Jewellery in mostly recycled copper and silver often including found or recycled objects and sea glass, inspired by nature and history. Also mixed media paintings, sketches and drawings.



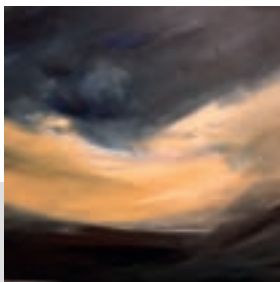
assjasolveiga@gmail.com Facebook: Arran Gems

Opening times: Fri till Mon 12 - 5pm. **Facilities available:** Parking.
Kilmory Public Hall, Kilmory, KA27 8PG: Bus route 323, Studio (turquoise door) at premises.

32 The Piggery

Nicky and Suzi back together again for the weekend.

Home produce available all originating from the farm by Nicky and a display of mixed media artwork for sale by Suzi.



t: 07711 196049 / 07923 041322

Insta: suzikennettbrownart and

Insta: arran_honesty box

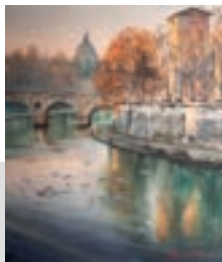
Opening times: Fri till Mon 11 - 4pm.

Facilities available: Ample parking and toilet. **Clachaig Farm, Kilmory, KA26 8PG:** Via the Cleats Shore Track (signpost - Cart track - Cleats Shore) ok for vehicles.

33 Andrew Roi

Through the medium of watercolour, I express my experience of the world.

Of life. With visual language I communicate with others, and offer a gift, a reflection, back to Source.



t: 07500 170653 e: andrewroi.art@gmail.com

www.andrewroi.art

Opening times: Fri - Mon 10 till 5pm.

Facilities available: Toilet, parking, wheelchair accessible. **Cnocanreoch Farm, Tollynn Beach Kilmory, KA27 8PQ:** Heading north into Kilmory village, take farm road, on the left, towards beach (signposted 'Tollynn Beach House'. Then halfway along, turn left into Cnocanreoch Farm.

34

Nick Brooker Art

Life-sized bird mobiles created from re-used materials painted in acrylics. Linoprints of island views and wildlife. Originals, prints and cards.

t: 07985 276 191

e: nickbrooker2@gmail.com

www: nickbrookerart.co.uk

Opening times: Fri till Mon 10 - 5pm.

Facilities available: Off-road parking and toilet. **Southview, Shiskine, KA27**

8EP: Southview is on B880 String Road SW of Shiskine between the primary school and St Molios Church.



35

Isobel Milne at Meadowbank Studio

Mixed media connections to the Arran landscape.

t: 07876 441833 **e:** isomilne@gmail.com

www: isobelmilne.co.uk **Opening times:** Fri till Mon 11 - 4pm.

Facilities available: Visitor parking at Shiskine Hall. Disabled parking available on drive at Meadowbank. Toilets. **Meadowbank, Torbeg, Shiskine, KA27 8HE:**

From Brodick: to Shiskine on String road, turn right before the phone box, after a mile, turn left towards Blackwaterfoot. Meadowbank is on left before Shiskine Hall. From Blackwaterfoot, towards Machrie north west. Meadowbank is on the right just after Shiskine Hall.



36

Arranach Barrel Furniture

Barrel furniture and accessories made exclusively from Lochranza distillery barrels. Chairs, tables, drinks cabinets, benches, stools, clocks, trivets & more. Furniture restoration & repair. Reupholstery of small to medium pieces.

t: 07733 738 127

e: johndivine1960@gmail.com

www: arranach.co.uk **Opening times:** Fri - Mon 9.30 till 5pm.

Facilities available: Parking / wheelchair access. **Ashlar, Machrie, KA27 8DX:** Situated midway between Machrie Standing Stones and King's Cave car parks.



37

Andy Leese Joiner and Furniture Maker

Handcrafted hardwood furniture mainly inspired by the Arts & Crafts movement and Charles Rennie Mackintosh. Each unique piece is designed to combine strength with individual style.
Commissions undertaken.

t: 01770 840246 e: andyleese100@gmail.com Facebook : **Andy Leese Joiner and Furniture Maker.** **Opening times:** Fri - Mon 10 till 5pm. **Facilities available:** Parking.
Ashlar, Machrie, KA27 8DX: same as studio 36



38

Gobhlach Art Studio

Mixed media drawing and sculpture specialising in ceramic sculpture. Inspired by the form, patterns and forces that shape the natural world.

t: 01770 850519
e: treborsnevets@hotmail.co.uk
Insta: gobhlach_art
Opening times: Fri till Mon 9 - 6pm.
Facilities available: Parking, toilet.
Mill Cottage, Pirmill, KA27 8HP: Mill Cottage is the white bungalow beside the 'Allt Gobhlach' burn, up the track immediately to the right of the Pirmill Village Shop and Post Office.

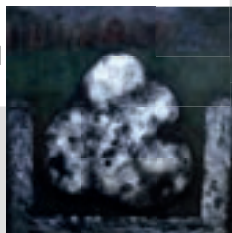


39

Ed O'Donnelly

Large scale watercolour paintings indirectly responding to ideas around geology, archaeology, land and sea.

t: 01770 830208 e: edwardodonnelly@gmail.com **www.edodonnelly.co.uk**
Opening times: Fri till Mon 10 - 5pm.
Facilities available: Toilet, limited parking
No wheelchair access. **Ashcraig, Bearlach Dearg Lochranza, KA27 8JF:** Once in Lochranza take the Fairy Dell indicated turning drive to the North side of the village and park at the head of the Loch. Ashcraig is 200m up a track. If practical, park at the loch and walk as directed. If driving, the studio is at the first property on the left.



40 Artist Friends of Sannox

We welcome you to Sannox Christian Centre to view a variety of artworks including landscapes and painted chairs and to take part in family friendly art and craft, creative activities.



t: 01770 810201 e: admin@sannox.org

www.sannox.org Opening times:

Fri - Sun 10 till 4pm and Monday 10 till 1pm.

Facilities available: Toilets, parking, teas, coffees, juice and biscuits, wheelchair accessible. **Sannox Christian Centre Sannox, KA27 8JD** From Brodick, travel north, through Sannox village, over bridge and immediately turn right into a narrow lane, opposite Corrie Golf Club.

41 Saltwater Studio and Gallery

Contemporary seascapes, local scenes and large wave paintings. Every size from miniature to several metres in oils, watercolours and charcoals.



t: 01770 307331 e: senja@senja-art.com

www.saltwatergallery.co.uk Facebook: [SenjaArtist](#).

Opening times: Fri - Sat 10 till 5pm and Sunday 10 till 4pm.

Facilities available: Easy and plentiful parking, wheelchair accessible. **Cladach, Brodick Isle of Arran, KA27 8DE:** Drive north out of Brodick, past Home Farm shopping area, then take next left at Cladach. I am next door to Arran Brewery, just behind The Wineport bistro and pub.

42 Cladach Studio

Cladach Studio will be showing work by painters Katie Litton and Naomi Rae, and ceramicist Esther Brown; three artists whose work reflects their love of the island from which they draw their inspiration.



t: 07970 513 652

www.katielitton.com

www.naomi-rae.co.uk

www.bataban.co.uk Opening times:

Fri till Mon 10 - 5pm. **Facilities available:** Parking. **Cladach Studio, Cladach, Brodick KA27 8DE:** North of Brodick, follow signs for Arran Brewery. We are opposite Cladach Garden Centre. Bus route 324.

43

Art at Ach Na Darach

Arran it's landscapes and people are always an inspiration and I try and capture both in my paintings. I work in oils and watercolours, big and small and enjoy both.



t: 01770 302390 e: jillhargan@aol.co.uk

www.jillharganart.co.uk Opening times: Fri - Mon 9 till 6pm.

Facilities available: Parking for 3 vehicles is available by the house but opposite is a lay-by which can also be used, toilet is available. Wheelchair access is possible but please phone first to arrange.

Ach Na Darach, Brodick, KA27 8DP: 2 houses past the museum on the way out of Brodick.

44

Ann Hume

I paint mainly in acrylics, sometimes in oils. My work includes my personal response to landscape and related themes as well as other subject matter.



t: 07975 589432

Insta: [Ann_E_Hume](#)

Opening times: Fri - Mon 11 till 4pm.

Facilities available: Ample parking space. **Stronach Cottage, Brodick KA27 8DG:** Travel north from Brodick village for 1 mile, take the lane beside the primary school, Stronach Cottage is on the right as the lane opens out.

45

Elaine Mackie Wright Arran Artist and Jeweller

Art and handcrafted silver jewellery inspired by a love of Mother Nature & ancient spiritual symbolism.

Limited edition prints and Arran inspired merchandise also available.

t: 07866 539429 e: emackiewright@googlemail.com Insta: [elainemackiewrightartist](#)

Opening times: Fri - Mon 10.30 till 5pm.

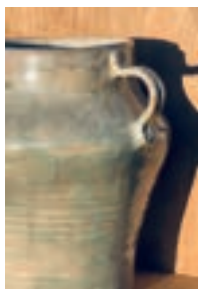
Facilities available: Parking, toilet, wheelchair accessible. **Spirit Within Mystical Shop, The Burnside, Auchrannie Road, Brodick, KA27 8PB:**

From Brodick Main Street turn left onto the Auchrannie Road; we are 350 feet to our workshop and studio.



46

Ormidale Art



Welcome our new artist - **Lesley Lockhart**:
Decorative still lifes, originals, prints and cards
(lloc09@googlemail.com)
See new works from - **Lynda Davidson**: Seascape,
landscape & abstract, all original artwork
(lynda.davidson@hotmail.co.uk)
Kirsty Forsyth: Sculptural and Functional Pottery
(kirsty.e.forsyth@gmail.com)

t: 07879416383 Opening times: Fri, Sat, Sun 10.30 till 5pm,
Mon 10.30 till 3pm. **Facilities available:** Parking, toilets and
fully accessible. **Ormidale Sports Pavilion, Brodick KA27 8DL:**
Turn right from the ferry terminal, and the pavilion is on the
left hand side of the road after the Brodick Hall.

47

Kirsteen Holuj Ceramics

Unique thrown, textured ceramics
complimented with metal
botanical additions.
Exploring dramatic landscapes
and the small details.

t: 07709 055657

e: kirsteen@kirsteenholuj.co.uk

www.kirsteenholuj.co.uk

Opening times: Fri - Mon 10 till 4pm.

Facilities available: Roadside parking. **Braeside, West Mayish Road,
Brodick, KA27 8AF:** From Brodick ferry terminal turn right, after 0.5
miles turn left after The Old Post Office Laundrette, continue up the
hill. Braeside is on the left just past the Fire Station.



48 Faye Waterlow Artist

Faye is an Arran Born and bred mixed media artist. She specialises in stunning watercolours inspired by nature and the island itself. Originals, limited edition prints, cushion covers, cards and other beautiful gifts available.



t: 07535 357244 e: fayewaterlow@gmail.com www:fayewaterlow-artist.sumupstore.com **Opening times:** Fri - Mon 11 till 4pm or by appointment. **Facilities available:** Parking, toilet.
Auchenard, West Mayish Road, Brodick, KA27 8AF: From Brodick ferry terminal turn right, after 0.5 mile turn left after The Old Post Office Launderette, continue 100m, Auchenard is opposite the Fire Station.

49 Fiona Greener

Oil on canvas landscapes and seascapes inspired by the ever changing weather and atmosphere on the Isle of Arran.



t: 07941 907596 e: fgreener@live.co.uk
Opening times: Fri - Mon 11 till 4pm. **Facilities available:** Limited roadside parking.
6 Alma Terrace, Brodick KA27 8BA: From Brodick pier turn right and take the first turning left after the Douglas hotel. Follow the road up the hill and round to the right. After the bridge turn left which takes you round to the back of Alma Terrace where you will find a blue painted studio.

50 E Coral Smith

Hand made books, hard & soft backs, artist journals, sketchbooks, notebooks, Fine Silver jewellery created from Art Clay Silver, Japanese Sashiko embroidered bags, journal covers, jackets, and possibly more!



t: 07368 222236 e: ecoral.smith@gmail.com **Opening times:** Fri - Mon 11 till 4pm. **Facilities available:** Limited parking on Alma Road. 3 wide steps to the workshop. **The Studio at the rear of 8a Alma Terrace, Brodick, KA27 8BA:** From Brodick Pier, turn right & take 1st turning on left after Douglas Hotel. Follow road up the hill and round to the right. After the bridge turn left which takes you round to back of Alma Terrace, studio is the 1st white building on your left.

51 The Studio of Stephanie Province

Conceptual artworks exploring questions about human complexity using found materials & mixed media. My artworks give tangible form to ideas, experiences and emotions; my response to being in the world.

t: 07979 030196 e: stephanie@stephanieprovince.com www.stephanieprovince.com

Opening times: Fri - Mon 10 till 5pm. **Facilities available:** Parking, wheelchair accessible, toilet, refreshments. **Rothwell Lodge, Brodick,**

KA27 8AJ: From Brodick ferry terminal turn right. Turn left immediately after RBS bank and the studio is diagonally opposite the end of the road (house with balcony).



A BIG THANK YOU TO ALL OF OUR ADVERTISERS

Your support is hugely appreciated
and we hope that by working together
we all continue to thrive
in our beautiful island community.

Arran Art Gallery

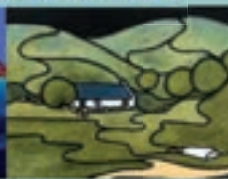


An exhibition featuring many of Arran's local talent, including 2 resident artists, Nick Giles & Bataban Ceramics, along with a large collection of Scotland's biggest names.

www.arranartgallery.com

Email: info@arranartgallery.com

Tel: 01770 700250



Visit us: Shore Road, Whiting Bay, KA27 8QH



New Arran Journals and Notepads
arrangraphicsonline.com
UK shipping included.



ARRAN GRAPHICS

Established: 1996

ARRAN

SENSE of SCOTLAND

From our Island to your Home.



Home, bath and body fragrance inspired by our
unspoiled way of life on the Isle of Arran.

Proudly made in Scotland since 1989.

Visit us at
The Home Farm, Brodick,
Isle of Arran.

Take a piece of ARRAN home today.

arran.com



Arran Active
more than an outdoor shop

Proud to support
Arran Arts

Kayak & Paddleboard hire

Outdoor Clothing & Footwear

Camping Gear, Wetsuits, Books & more...

SHOP ONLINE
arranactive.co.uk

enquiries@arranactive.co.uk
01770 302113
Shore Road, Brodick
KA27 8AJ

 Arran Active  @arranactive



A NEW WAY

Experience a tour and a tasting in the home of the Lagg Single Malt. Soak in the views while having lunch in our café, or a dram in our whisky bar.

Please visit laggwhisky.com or call 01770 870565 for more information and opening times.

TO SEE WHISKY




COAST Discovery Centre




www.arrancoast.com
01770 600 656

Learn
about Arran's amazing sea life



Join
our team at exciting events




Set Sail
on our research vessel COAST Explorer






LOCHRANZA COUNTRY INN

A Community Hub

Ensuite Bedrooms • Wholesome Food • Fully licensed Bar

01770 830277

lcilochranza.co.uk

Celebrate with us as we reflect on 30 Years of Arran Single Malt

Book a tour and a tasting at
Lochranza Distillery, followed
by lunch at CASKS Café.

For more info please visit
arranwhisky.com or call
01770830264.

Arran
Single Malt



ARRAN ROCKS!

In 2025, the Isle of Arran was recognised by
UNESCO for its internationally important
geology, landscape and heritage.



www.arran-geopark.org.uk



Featuring some of the island's great food & drink alongside other Arran products, stunning jewellery and many other Scottish gift ideas.

Fabulous prints & gift options of Charles Herbert's work featuring Arran and the west coast available in our HOME FARM & SHORE ROAD stores.

www.thearrangiftbox.com
01779 303556
hello@thearrangiftbox.com



SHORE ROAD & HOME FARM VISITOR CENTRE BRODICK

James's Chocolate Shop
Brodick

01770 302873

- GIFT BOXES
- WEDDING FAVOURS
- SHOP ONLINE jamesofarran.com

voted best pub in the west of scotland
2022/2023 thistle awards

the Ormidale

home cooked
bar meals
served 5-9 daily
real ales
ensuite
accommodation



beer garden
wifi
quizzes
find us
on facebook

email: reception@ormidale-hotel.co.uk
tel: 01770 302293

Chameleon LADIES' BOUTIQUE



28 HAMILTON TERRACE
LAMLASH
CHAMELEONARRAN.COM

OPENING HOURS
MON-SAT 10:30 - 5

Find us on 

Interior Design Gifts
Janelle's

Lamlash
Opening hours
Mon - Sat
10am till 5pm
Sun 12noon
till 4pm

01770600723



Find us on Facebook and follow on Instagram

ARRAN SELF STORAGE



- small & large cabins
- climate controlled
- condensation free
- CCTV monitored

Gavin Fulton 01770 600705
www.arranstorage.co.uk



ARRAN ARTS HERITAGE TRAIL

An exciting new way to explore
Arran's landscapes through the
eyes of iconic artists

Featuring... Joan Eardley Alasdair Gray
Jessie M King Margot Sandeman William
McTaggart Mary Armour Agnes Miller
Parker James Kay Waller Hugh Paton
Craigie Aitchison John MacIaughlan Milne
John Muir Wood Samuel Peploe & more



www.arranartsheritagetrail.com